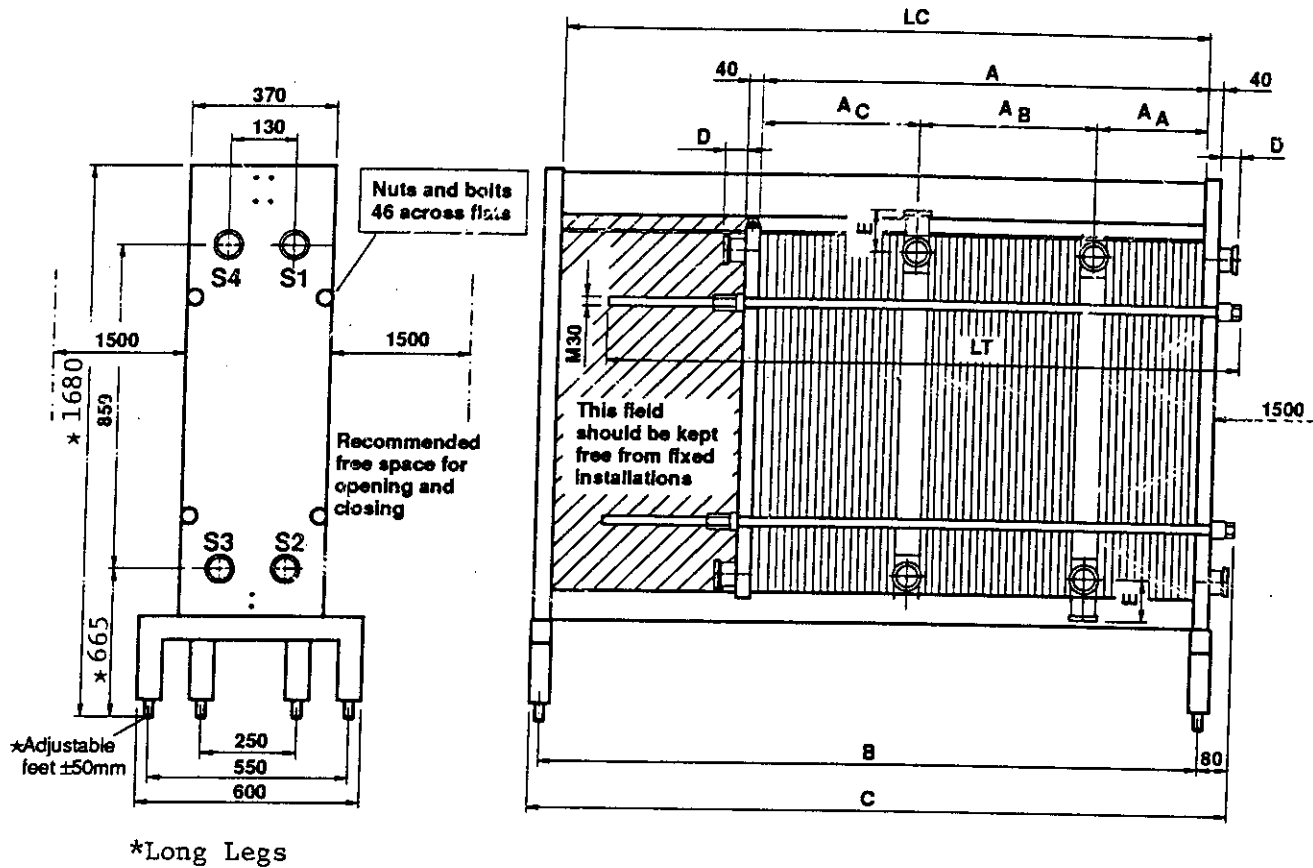


No. 32200-3431	
Date	9301
Edition	1
Dept.	TI-MS

All dimensions in mm

PHE-TYPE CLIP 6-RM

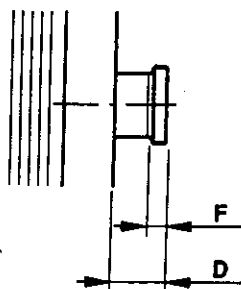
2 CONNECTION PLATES



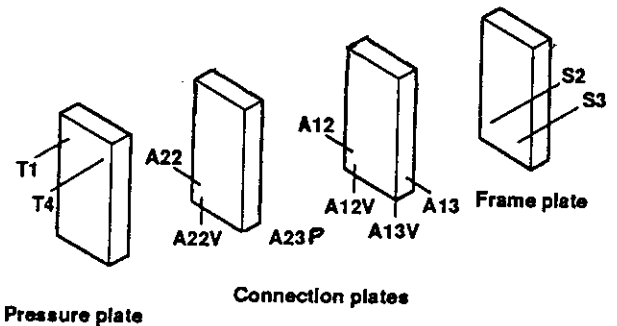
For actual measures (A, B, C, etc.) please see computer printed specification.

CONNECTION TYPE

1. Connection of stainless steel Ø51 mm



CONNECTION LOCATIONS



Note: A23P is a 2" Pressure Switch connection.

STANDARD	SMS	DIN	IDF	RJT	CLAMP
D	40	42	42	42	42
E	100	102	102	102	102
F	20	22	22	22	22

NOTES!

- Connections with male part only.

Manufacturing no.	30102-84500	Date	950314 TONY
Plate Heat Exchanger type Drawing no.	CLIP 6-RM	Quantity	1
Customer COUNTRY CHARM DAIRY ARLINGTON, WA		Ref.	
Agent INTERSTATE SUPPLY SEATTLE, WA		Ref.	031395AJM
Supplier TETRA PAK PROCESSING SYSTEMS		Ref.	031395A

Plates with parallel flow.

The plate pack is tightened to 861 mm

Always observe plate from its gasket side. A ten figure part number plus one letter are stamped on the upper part of the plate.

The plates are assembled, counting from the frame plate to the pressure plate, in sequence stated below with the gasket side facing the pressure plate.

For information about installation, running, cleaning etc. see the instruction book.

Measurements (see drawing)	mm	
A = 861	AA = 151	: Net weight
LT = 2250	AB = 570	: 622 kg
B = 2445	AC = 205	: Liquid volume
		: 122 l
C = 2595		: Design pressure
		: 145.0 PSI

Connection standard
2" CLAMP

Remarks

Test pressure : 188.0 PSI
Design temp : 230 F

Bolts : M30

* Designates a 1/8" raw regenerator drainage hole.

Section no 1 /AA-----		
Media	->MILK	=>WATER
Flow rate	7000 PPH	7000 PPH
Temp. program	153 to 163 F	167 to 157 F
Pressure drop	2 PSI	1 PSI
Liquid volume	8.5 l	9.2 l
Location of connections		
inlet	A12	S3
outlet	S2	A13V
Material in connections	SS	SS
Plates material	AISI 316	
thickness	0.60 mm	
Gasket material	NITRILE	CLIP-ON
Heat transfer surface	4.20 m2	
Plate grouping	2*6MH	

	1*7+1*6ML	
Section no 2 /AB-----		
Media	->MILK	=>MILK
Flow rate	7000 PPH	7000 PPH
Temp. program	38 to 153 F	163 to 48 F
Pressure drop	8 PSI	8 PSI
Liquid volume	39.1 l	39.1 l
Location of connections		
inlet	A22	A13
outlet	A12V	A23P
Material in connections	SS	SS
Plates material	AISI 316	
thickness	0.60 mm	
Gasket material	NITRILE	CLIP-ON
Heat transfer surface	19.08 m2	
Plate grouping	5*6+5*5MH	

	5*6+5*5ML	
Section no 3 /AC-----		
Media	->WATER	=>MILK
Flow rate	8000 PPH	7000 PPH
Temp. program	33 to 43 F	48 to 36 F
Pressure drop	3 PSI	3 PSI
Liquid volume	13.5 l	12.8 l
Location of connections		
inlet	T1	A23P
outlet	A22V	T4
Material in connections	SS	SS
Plates material	AISI 316	
thickness	0.60 mm	
Gasket material	NITRILE	CLIP-ON
Heat transfer surface	6.30 m2	
Plate grouping	2*6+1*7ML	

	3*6MH	

Section no	1 /AA-----	2	-----
Media		->I.C. MIX	=>WATER
Flow rate		5000 PPH	20000 PPH
Temp. program		160 to 180 F	184 to 179 F
Pressure drop		2 PSI	8 PSI
Liquid volume		0.0 l	0.0 l
Location of connections			
inlet		A12	S3
outlet		S2	A13V
Material in connections		SS	SS
Plates material		AISI 316	
thickness		0.60 mm	
Gasket material		NITRILE	CLIP-ON
Heat transfer surface		0.00 m2	
Plate grouping		2*6MH	

		1*7+1*6ML	

Section no	2 /AB-----	2	-----
Media		->I.C. MIX	=>I.C. MIX
Flow rate		5000 PPH	5000 PPH
Temp. program		38 to 160 F	180 to 61 F
Pressure drop		15 PSI	12 PSI
Liquid volume		39.1 l	39.1 l
Location of connections			
inlet		A22	A13
outlet		S2	A23P
Material in connections		SS	SS
Plates material		AISI 316	
thickness		0.60 mm	
Gasket material		NITRILE	CLIP-ON
Heat transfer surface		19.08 m2	
Plate grouping		5*6+5*5MH	

		5*6+5*5ML	

Section no	3 /AC-----	2	-----
Media		->WATER	=>I.C. MIX
Flow rate		7400 PPH	5000 PPH
Temp. program		33 to 45 F	61 to 40 F
Pressure drop		2 PSI	8 PSI
Liquid volume		13.5 l	12.8 l
Location of connections			
inlet		T1	A23P
outlet		A22V	T4
Material in connections		SS	SS
Plates material		AISI 316	
thickness		0.60 mm	
Gasket material		NITRILE	CLIP-ON
Heat transfer surface		6.30 m2	
Plate grouping		2*6+1*7ML	

		3*6MH	

Plate no.	Plate code no.	Punched corner of the plate				Flow direction on the gasket side of the plate	
		upper left	lower left	lower right	upper right		
		S	1	2	3	4	
				<--	=<=		
1	371917 3464B			0	0===>===		Up
2	372017 3406A		----	->--0	0	0	Down
3	371917 3403B		0	0	0	0	Up
4	372017 3403A		0	0	0	0	Down
5	371917 3403B		0	0	0	0	Up
6	372017 3403A		0	0	0	0	Down
7	371917 3403B		0	0	0	0	Up
8	372017 3403A		0	0	0	0	Down
9	371917 3403B		0	0	0	0	Up
10	372017 3403A		0	0	0	0	Down
11	371917 3403B		0	0	0===>==0		Up
12	372017 3410A		0----	->--0		0	Down
13	371917 3411B		0		===<===0		Down
14	372017 3409A		0--<----		0	0	Up
15	371917 3403B		0	0	0	0	Down
16	372017 3403A		0	0	0	0	Up
17	371917 3403B		0	0	0	0	Down
18	372017 3403A		0	0	0	0	Up
19	371917 3403B		0	0	0	0	Down
20	372017 3403A		0	0	0	0	Up
21	371917 3403B		0	0	0	0	Down
22	372017 3403A		0	0	0	0	Up
23	371917 3403B		0	0	0	0	Down
24	372017 3403A		0--<----	0	0	0	Up
25	371917 3410B			0	0==<===0		Down
26	372017 3491A			0	0		
		A1		->-	V=>		
				<-V	=<=		
1	371917 3464B			0	0===>===		Up
2	372017 3406A		----	->--0	0	0	Down
3	371917 3403B		0	0	0	0	Up
4	372017 3403A		0	0	0	0	Down
5	371917 3403B		0	0	0	0	Up
6	372017 3403A		0	0	0	0	Down
7	371917 3403B		0	0	0	0	Up
8	372017 3403A		0	0	0	0	Down
9	371917 3403B		0	0	0===>==0		Up
10	372017 3410A		0----	->--0		0	Down
11	371917 3406B		0	0	===<===0		Down
12	372017 3409AS		0--<----	*	0	0	Up
13	371917 3403B		0	0	0	0	Down
14	372017 3403A		0	0	0	0	Up

Ed. 1

15	371917	3403B	0	0	0	0	Down
16	372017	3403A	0	0	0	0	Up
17	371917	3403B	0	0	0	0	Down
18	372017	3403A	0	0	0	0	Up
19	371917	3403B	0	0	0===<===0		Down
20	372017	3405A	0--<---0		0		Up
21	371917	3404B		0	0===>===		Up
22	372017	3406A	---->--0		0	0	Down
23	371917	3403B	0	0	0	0	Up
24	372017	3403A	0	0	0	0	Down
25	371917	3403B	0	0	0	0	Up
26	372017	3403A	0	0	0	0	Down
27	371917	3403B	0	0	0	0	Up
28	372017	3403A	0	0	0	0	Down
29	371917	3403B	0	0	0===>==0		Up
30	372017	3410A	0--->--0			0	Down
31	371917	3406B	0	0	===<===0		Down
32	372017	3409AS	0--<---*		0	0	Up
33	371917	3403B	0	0	0	0	Down
34	372017	3403A	0	0	0	0	Up
35	371917	3403B	0	0	0	0	Down
36	372017	3403A	0	0	0	0	Up
37	371917	3403B	0	0	0	0	Down
38	372017	3403A	0	0	0	0	Up
39	371917	3403B	0	0	0===<===0		Down
40	372017	3405A	0--<---0		0		Up
41	371917	3404B		0	0===>===		Up
42	372017	3406A	---->--0		0	0	Down
43	371917	3403B	0	0	0	0	Up
44	372017	3403A	0	0	0	0	Down
45	371917	3403B	0	0	0	0	Up
46	372017	3403A	0	0	0	0	Down
47	371917	3403B	0	0	0	0	Up
48	372017	3403A	0	0	0	0	Down
49	371917	3403B	0	0	0===>==0		Up
50	372017	3410A	0--->--0			0	Down
51	371917	3406B	0	0	===<===0		Down
52	372017	3409AS	0--<---*		0	0	Up
53	371917	3403B	0	0	0	0	Down
54	372017	3403A	0	0	0	0	Up
55	371917	3403B	0	0	0	0	Down
56	372017	3403A	0	0	0	0	Up
57	371917	3403B	0	0	0	0	Down
58	372017	3403A	0	0	0	0	Up
59	371917	3403B	0	0	0	0	Down
60	372017	3403A	0	0	0	0	Up
61	371917	3403B	0	0	0===<===0		Down
62	372017	3405A	0--<---0		0		Up
63	371917	3404B		0	0===>===		Up
64	372017	3406A	---->--0		0	0	Down

Ed. 1

65	371917	3403B	0	0	0	0	Up
66	372017	3403A	0	0	0	0	Down
67	371917	3403B	0	0	0	0	Up
68	372017	3403A	0	0	0	0	Down
69	371917	3403B	0	0	0	0	Up
70	372017	3403A	0	0	0	0	Down
71	371917	3403B	0	0	0	0	Up
72	372017	3403A	0	0	0	0	Down
73	371917	3403B	0	0	0	0	Up
74	372017	3410A	0	0	0	0	Down
75	371917	3406B	0	0	0	0	Down
76	372017	3409AS	0	0	0	0	Up
77	371917	3403B	0	0	0	0	Down
78	372017	3403A	0	0	0	0	Up
79	371917	3403B	0	0	0	0	Down
80	372017	3403A	0	0	0	0	Up
81	371917	3403B	0	0	0	0	Down
82	372017	3403A	0	0	0	0	Up
83	371917	3403B	0	0	0	0	Down
84	372017	3403A	0	0	0	0	Up
85	371917	3403B	0	0	0	0	Down
86	372017	3405A	0	0	0	0	Up
87	371917	3404B	0	0	0	0	Up
88	372017	3406A	0	0	0	0	Down
89	371917	3403B	0	0	0	0	Up
90	372017	3403A	0	0	0	0	Down
91	371917	3403B	0	0	0	0	Up
92	372017	3403A	0	0	0	0	Down
93	371917	3403B	0	0	0	0	Up
94	372017	3403A	0	0	0	0	Down
95	371917	3403B	0	0	0	0	Up
96	372017	3403A	0	0	0	0	Down
97	371917	3403B	0	0	0	0	Up
98	372017	3410A	0	0	0	0	Down
99	371917	3406B	0	0	0	0	Down
100	372017	3409AS	0	0	0	0	Up
101	371917	3403B	0	0	0	0	Down
102	372017	3403A	0	0	0	0	Up
103	371917	3403B	0	0	0	0	Down
104	372017	3403A	0	0	0	0	Up
105	371917	3403B	0	0	0	0	Down
106	372017	3403A	0	0	0	0	Up
107	371917	3403B	0	0	0	0	Down
108	372017	3403A	0	0	0	0	Up
109	371917	3403B	0	0	0	0	Down

Ed. 1

110 372017 3405A
111 371917 3484B

0--<---0

0

Up

0

0

A2

->-

:

<-V

:

1 371917 3471A

---->--0

0

Down

2 372017 3409B

0 0

0===>===

Up

3 371917 3403A

0 0

0 0

Down

4 372017 3403B

0 0

0 0

Up

5 371917 3403A

0 0

0 0

Down

6 372017 3403B

0 0

0 0

Up

7 371917 3403A

0 0

0 0

Down

8 372017 3403B

0 0

0 0

Up

9 371917 3403A

0 0

0 0

Down

10 372017 3403B

0 0

0 0

Up

11 371917 3403A

0 0

0 0

Down

12 372017 3403B

0 0

0===>==0

Up

13 371917 3410A

0--->--0

0

Down

14 372017 3411B

0

===<===0

Down

15 371917 3409A

0--<---

0 0

Up

16 372017 3403B

0 0

0 0

Down

17 371917 3403A

0 0

0 0

Up

18 372017 3403B

0 0

0 0

Down

19 371917 3403A

0 0

0 0

Up

20 372017 3403B

0 0

0 0

Down

21 371917 3403A

0 0

0 0

Up

22 372017 3403B

0 0

0 0

Down

23 371917 3403A

0 0

0 0

Up

24 372017 3403B

0 0

0==<==0

Down

25 371917 3405A

0--<---0

0

Up

26 372017 3404B

0

0===>===

Up

27 371917 3406A

---->--0

0 0

Down

28 372017 3403B

0 0

0 0

Up

29 371917 3403A

0 0

0 0

Down

30 372017 3403B

0 0

0 0

Up

31 371917 3403A

0 0

0 0

Down

32 372017 3403B

0 0

0 0

Up

33 371917 3403A

0 0

0 0

Down

34 372017 3403B

0 0

0 0

Up

35 371917 3403A

0 0

0 0

Down

36 372017 3403B

0 0

0===>==0

Up

37 371917 3410A

0--->--0

0

Down

38 372017 3491B

0

0

->-

==>

T

1

2

3

4

DATE : 950314

30102-84500

Ed. 1

Plate-req. for manuf.order:

Orderno. : 031395A-

CLIP6 AISI 316 0.60 NITRILE

CLIP-ON

PLATE NUMBER	QUANTITY
371917 3403	68
371917 3404	4
371917 3405	1
371917 3406	6
371917 3409	1
371917 3410	3
371917 3411	1
371917 3464	2
371917 3471	1
371917 3484	1
372017 3403	59
372017 3404	1
372017 3405	5
372017 3406	6
372017 3409	2
372017 3409S	5
372017 3410	6
372017 3411	1
372017 3491	2

TOTAL (CHANNELPL.+ENDPL.)

175

MEASUREMENTS

Manufacturing no. 30102-84500 Date 950314
TONY

Plate Heat Exchanger type CLIP 6-RM Quantity 1
Drawing no.

MC - ordeno. 031395AJM Ordeno. 031395A

A-MEAS. TOTAL	861 mm	TOTAL WEIGHT	622 KG
A+FREE SPACE	1185 mm	TOTAL VOLUME	122.1 L
B - MEASURE	2445 mm		
C - MEASURE	2595 mm		
CONN. STD	2" CLAMP		

PER SECTION

SECT. NO.	PLATE AREA m2	VOLUME IN LTR.		A-MEASURE (mm)
		SIDE 1 /	SIDE 2	
1	4.20	8.5 /	9.2	151 (AA)
2	19.08	39.1 /	39.1	570 (AB)
3	6.30	13.5 /	12.8	205 (AC)

CARRYING BARS

CARR. BAR L. 2400 mm EST. MIN. LENGTH 1435 mm
EXTENDIBLE BY : PLATE QUANT. / FREE HANGING
151 PCS / 965 mm

TIGHTENING BOLTS

TIGHT. BOLT L. 2250 mm EST. MIN. LENGTH 1375 mm
TIGHT. BOLT DIM. M30
EXTENDIBLE BY : PLATE QUANT. / FREE HANGING
137 PCS / 875 mm

CENTRE OF GRAVITY	EMPTY	FILLED (mm)	
HORIZONTAL	608	584	(from the outside of the frame plate)
VERTICAL	830	830	(from the underside foot or frame)

FOUNDATION LOAD	OPENED	OPERATING (N)
SUPP. COLUMN SIDE	3658	1755
FRAME SIDE	4580	5551